



NEWCLIP
TECHNICS



TM

INITIAL

HINGE SCREW

STERILE R

Ready
when you are!

With a non sterile standard kit



Calling on medical staff

Constraints



Complex traceability



Contracted out sterilization



Suppliers' deadline

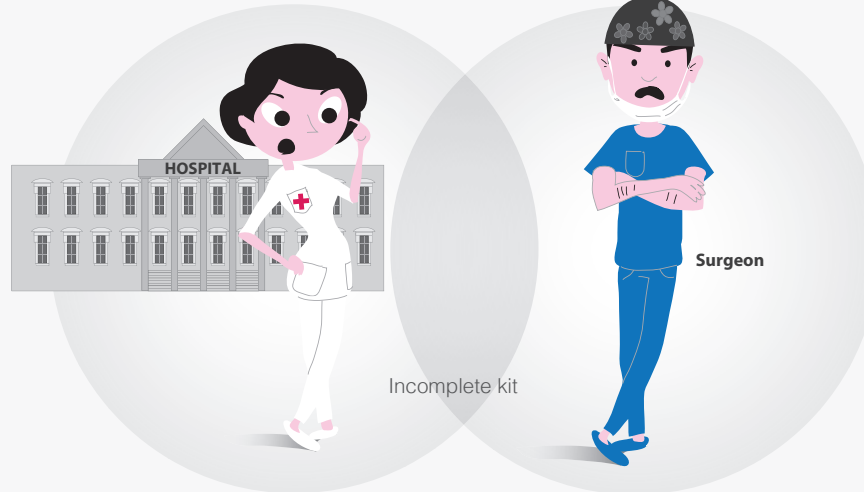
High costs



- \$ Stocks
- \$ Control
- \$ Cleaning
- \$ Decontamination
- \$ Sterilization



Bulky storage



Complex process



Prevents an effective solution & a quick response



Defective sterilization



Incomplete kit



Damaged instrumentation



INCREASED RISKS

NON OPTIMIZED surgery



URGENT SURGICAL CASES COMPROMISED

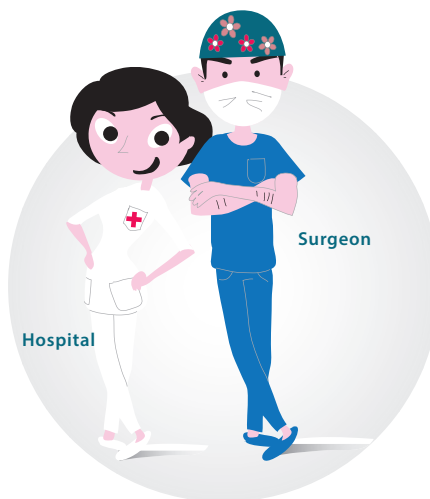
With the



kit



Cost efficiency



STERILE R SINGLE USE KIT
with state-of-the-art implants

Efficiency



Available when needed



Ready when you are!



Available when needed:

The Initial K Hinge Screw™ kit comes pre-sterilized and ready to use.



Safety:

The Initial K Hinge Screw™ kit is fully traceable and has a shelf life of 5 years. Its instrumentation are “always new” and have never been opened or used before.



Storage:

The Initial K Hinge Screw™ kit can be easily stored in the operating room because of its small size.



Costs:

Initial K Hinge Screw™ is a cost-effective solution. The additional costs including cleaning, decontamination, sterilization of kits are cancelled.



Contamination:

Sterile single-use instrumentation minimizes contamination risks.



Buying procedure:

Initial K Hinge Screw™ facilitates buying procedures: restocking and orders are simplified, stock management is optimized.

Kit content



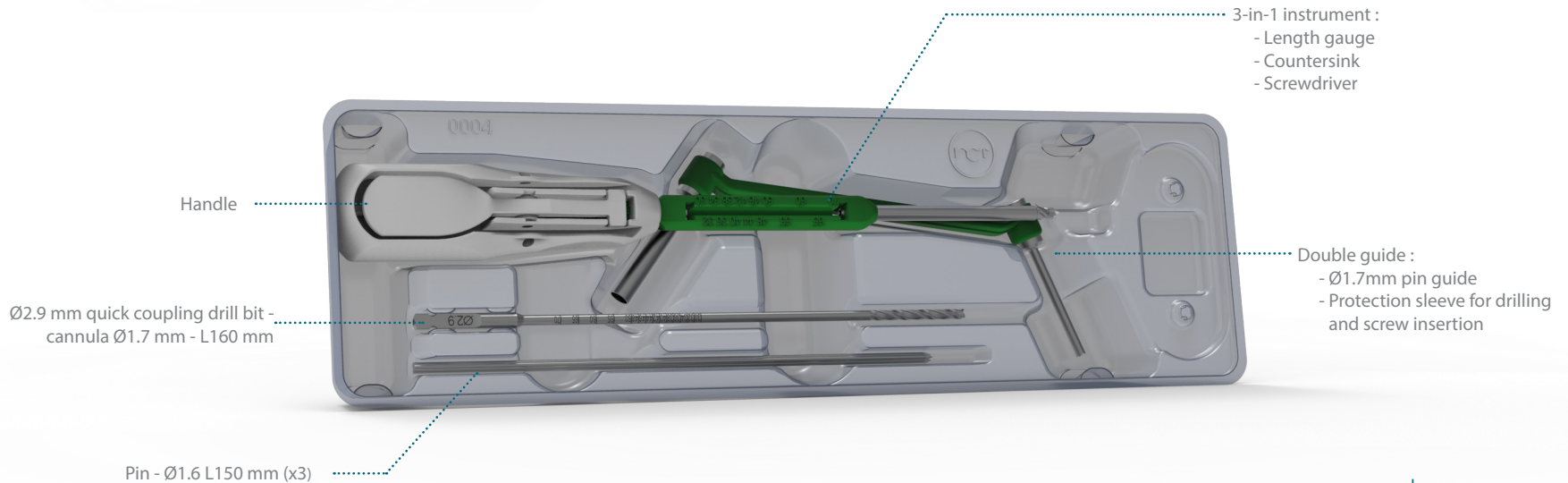
> Intended purpose

Initial K Hinge Screw is part of the Initial S Range. The Initial S™ single use sterile kits consist of a set of instruments or a set of instruments and implants (washers) to be used only in trauma or orthopaedic surgery, when Newclip Technics screws for osteosynthesis are fitted.

Implants of the Stand-Alone Screws range are intended for fractures fixation, osteotomies and arthrodeses of bones in adults, appropriate for the size of the device.

> Contraindications

- Pregnancy.
- Acute or chronic local or systemic infections.
- Allergy to one of the materials used or sensitivity to foreign bodies.



Ready
when you are!

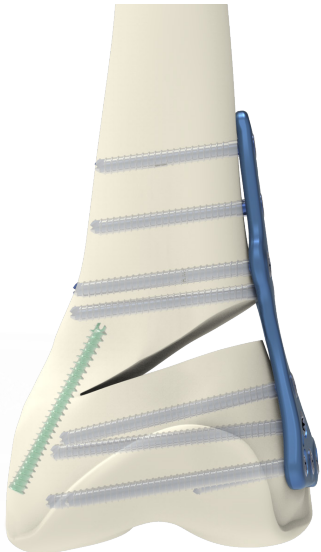
Technical features

> Hinge screw

- Cannulated screw to be guided by pin.
- Headless screw to be fully inserted into the bone.
- Insertion of a compressive screw into the hinge to:
 - Reinforce the bone hinge ⁽¹⁾.
 - Compress the hinge in case of fracture.



Can be used in the femur



Can be used in the tibia



> Associated single use instrumentation

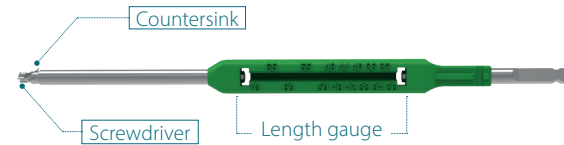
• Ready when you are !

If you need to position a screw in the hinge during your knee osteotomy procedure, the Initial K Hinge screw™ kit is available already sterile.

- Instrument with a protection sleeve.



- 3-in-1 instrument for a simple use: length gauge, countersink and screwdriver.

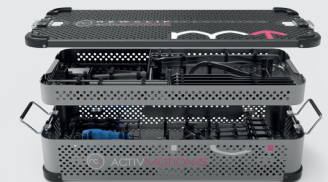


This instrument can be either used with the handle in the kit or can be attached to a power tool.

WARNING

The Hinge screw **must always be used with a plate and associated screws from the Activmotion S range** (reusable instrumentation kit illustrated opposite).

For more information, please refer to the Activmotion S brochure.



Surgical technique

The technique presented on this page is one of the surgical techniques possible. The choice is made according to the surgeon's preferences.

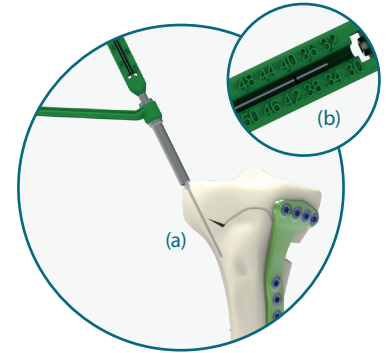
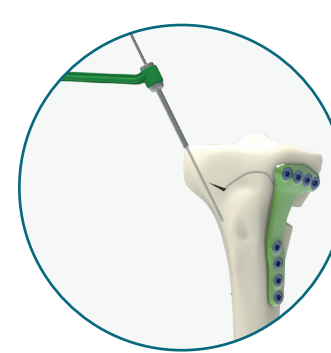
1. Incision

Associated with a HTO

Make an incision on the opposite side of the osteotomy, just at the level of the joint line. When a medial plate is used the incision is anterior to the fibular head.

Associated with a DFO

Make an incision on the opposite side of the osteotomy between the joint and the epicondyle.



2. Position the double guide on the cortex and insert the $\varnothing 1.6$ mm pin through it.

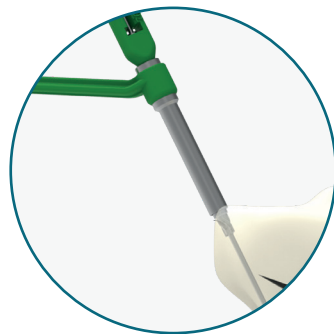
The pin should cross the hinge at the end of the sawing plane.

Then, remove the double guide.

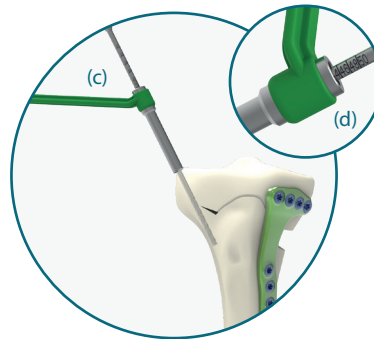
3. Slide the 3-in-1 instrument along the $\varnothing 1.6$ mm pin and through the protection sleeve of the double guide, until the cortex is reached (a).

With the measuring gauge part of the instrument, read the depth using the marking on the pin (b).

N.B. The pin can then be inserted deeper in order to prevent its removal during the drilling.



4. Widen the first cortex using the countersink part of the 3-in-1 instrument through the protection sleeve.



5. In the case of high bone density, it is necessary to drill before the screw insertion. Drill to the desired depth through the protection sleeve (c).

The drilling depth can be checked at the rear of the protection sleeve using the markings on the drill bit (d).



6. Select the appropriate screw length and insert the screw along the pin using the screwdriver part of the 3-in-1 instrument through the protection sleeve until the desired reduction and compression are achieved.

Then, remove the pin.

FINAL RESULT



Initial K Hinge screw™ kit

INITIAL K HINGE SCREW™ KIT - INSTRUMENTATION CONTENT

Ref.	Description	Content	Qty
KIT-SCZ4.5K	Instrumentation kit for Ø4.5 mm self-compressive cannulated screws	3 in 1 instrument for Ø4.5 mm screws	1
		5.8 mm single use handle	1
		Ø2.9 mm quick coupling drill bit - cannula Ø1.7 mm - L160 mm	1
		Double guide Ø1.7 mm / Ø5.2 mm for Ø4.5 mm screws	1
		Pin Ø1.6 L150 mm	3



Implants

Screws available separately in a sterile version (S-box).

STERILE SCREWS

Ref.	Description
H1.7ZT4.5L30D-ST	Ø4.5 mm self-compressive screw - cannula Ø1.7 - full thread - L30 mm - STERILE
H1.7ZT4.5L32D-ST	Ø4.5 mm self-compressive screw - cannula Ø1.7 - full thread - L32 mm - STERILE
H1.7ZT4.5L34D-ST	Ø4.5 mm self-compressive screw - cannula Ø1.7 - full thread - L34 mm - STERILE
H1.7ZT4.5L36D-ST	Ø4.5 mm self-compressive screw - cannula Ø1.7 - full thread - L36 mm - STERILE
H1.7ZT4.5L38D-ST	Ø4.5 mm self-compressive screw - cannula Ø1.7 - full thread - L38 mm - STERILE
H1.7ZT4.5L40D-ST	Ø4.5 mm self-compressive screw - cannula Ø1.7 - full thread - L40 mm - STERILE
H1.7ZT4.5L42D-ST	Ø4.5 mm self-compressive screw - cannula Ø1.7 - full thread - L42 mm - STERILE
H1.7ZT4.5L44D-ST	Ø4.5 mm self-compressive screw - cannula Ø1.7 - full thread - L44 mm - STERILE
H1.7ZT4.5L46D-ST	Ø4.5 mm self-compressive screw - cannula Ø1.7 - full thread - L46 mm - STERILE
H1.7ZT4.5L48D-ST	Ø4.5 mm self-compressive screw - cannula Ø1.7 - full thread - L48 mm - STERILE
H1.7ZT4.5L50D-ST	Ø4.5 mm self-compressive screw - cannula Ø1.7 - full thread - L50 mm - STERILE
H1.7ZT4.5L55D-ST	Ø4.5 mm self-compressive screw - cannula Ø1.7 - full thread - L55 mm - STERILE
H1.7ZT4.5L60D-ST	Ø4.5 mm self-compressive screw - cannula Ø1.7 - full thread - L60 mm - STERILE
H1.7ZT4.5L65D-ST	Ø4.5 mm self-compressive screw - cannula Ø1.7 - full thread - L65 mm - STERILE
H1.7ZT4.5L70D-ST	Ø4.5 mm self-compressive screw - cannula Ø1.7 - full thread - L70 mm - STERILE



References

Removal kit

Instruments available separately.

STERILE REMOVAL KIT			
Ref.	Description	Content	Qty
KIT-REMOVE-3	Removal kit for T15 hexalobe	T15 prehensor screwdriver	1

REUSABLE REMOVAL KIT		
Ref.	Description	Qty
ANC350	Ø4.5 mm AO quick coupling handle - Size 1	1
ANC1456	Pin Ø1.3 - L150 mm	2
ANC1675	T15 prehensor screwdriver with AO quick coupling system - cannula Ø1.4 mm	1



Bibliography

(1) Adding a protective screw improves hinge's axial and torsional stability in High Tibial Osteotomy

Christophe Jacquet^{a,d}, Auriane Marret^d, Robin Myon^d, Matthieu Ehlinger^b, Nadia Bahlouli^c, Adrian Wilson^d, Kristain Kley^a, Jean-Marie Rossi^{a,d,e}, Sebastien Parratte^d, Matthieu Ollivier^{a,d}.

^a Institute of Movement and locomotion Department of Orthopedics and Traumatology, St Marguerite Hospital, 270 Boulevard Sainte Marguerite, BP 29 13274 Marseille, France

^b Service de Chirurgie Orthopédique et de Traumatologie, CHU Hautepierre, Hôpital de Hautepierre, Hôpitaux Universitaires de Strasbourg, 1 Avenue Molière, 67098 Strasbourg Cedex, France

^c Laboratoire iCube iut de hagenau, 2 rue Boussingault, FR-67000 Strasbourg, France

^d Aix Marseille Univ, APHM, CNRS, ISM, Sainte-Marguerite Hospital, Institute for Locomotion, Department of Orthopedics and Traumatology, Marseille, France

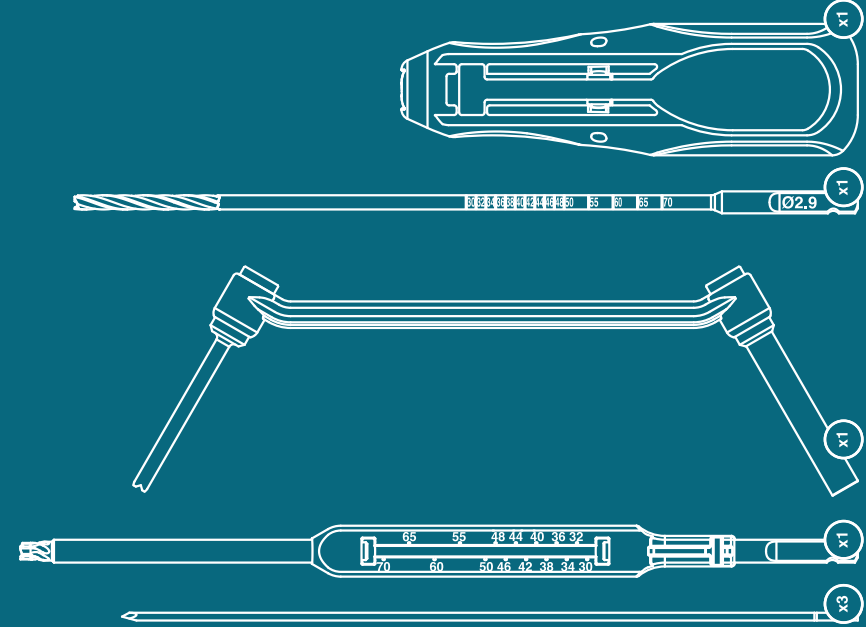
^e Centrale Marseille, 13451 Marseille Cedex 20, France

This information is intended to demonstrate the Newclip Technics portfolio of medical devices. Always refer to the package insert, product label and/or user instructions before using any Newclip Technics product. These products must be handled and/or implanted by trained and qualified staff who have read the instructions before use. A surgeon must always rely on her or his own professional clinical judgment when deciding whether to use a particular product when treating a particular patient. Product availability is subject to the regulatory or medical practices that govern individual markets. Please contact your Newclip Technics representative if you have questions about the availability of Newclip Technics products in your area.

KIT-SCZ4.5K

Instrumentation kit for Ø4.5 mm self-compressive cannulated screws

MADE IN FRANCE



NEWCLIP TECHNICS (HQ)
45 rue des Garottières
44115 Haute Goulaine, France
+33 (0)2 28 21 23 25
orders@newcliptechnics.com
www.newcliptechnics.com

NEWCLIP TECHNICS USA
Newclip USA LLC
340 Tesconi Circle, Suite A
Santa Rosa CA 95401 USA
+1 707 230 5078
customerservice@newclipusa.com
www.newcliptechnics.com

NEWCLIP TECHNICS IBERIA
Calle Frederic Mompou 4b
Sant Just Desvern
08960 Barcelona, España
+34 938 299 526
contact@newclipiberia.com
www.newcliptechnics.com

NEWCLIP TECHNICS GERMANY
Newclip GmbH
Pröllstraße 11
D-86157 Augsburg, Deutschland
+49 (0)821 650 749 40
info@newclipgmbh.com
www.newcliptechnics.com

NEWCLIP TECHNICS JAPAN
Newclip Technics Japan K.K.
KKK Bldg. 502, 3-18-1 Asakusabashi
Taito-Ku, Tokyo, 111-0053, Japan
+81 (0)3 58 25 49 81
Fax: +81 (0)3 58 25 49 86
www.newcliptechnics.com

NEWCLIP TECHNICS AUSTRALIA
Newclip Australia
3B/11 Donkin Street
West End 4101, Australia
+61 (0)2 81 886 110
solutions@newclipaustralia.com
www.newcliptechnics.com

NEWCLIP BELGIUM
Newclip Belgium
Av. du Bourg Etienne Demunter 5
1090 Jette, Belgium
+32 (0)9 2311331
contact@newclipbelgium.com
www.newcliptechnics.com