

SINGLE USE KIT

STERILE R



NEWCLIP
TECHNICS

STM
INITIAL

EVO

FOOT

With a non sterile standard kit



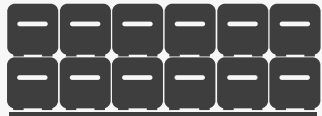
Calling on medical staff



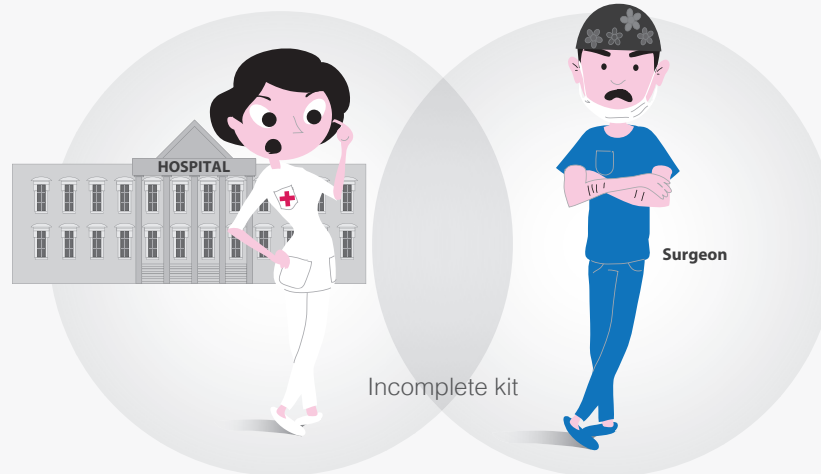
High costs



- \$ Stocks
- \$ Control
- \$ Cleaning
- \$ Decontamination
- \$ Sterilization



Bulky storage



Complex process



Prevents an effective solution & a quick response



Defective sterilization



Incomplete kit



Damaged instrumentation



INCREASED RISKS

NON OPTIMAL surgery



URGENT SURGICAL CASES COMPROMISED

With the



kits

Safety >



+



+



Risk of contamination

Cost efficiency

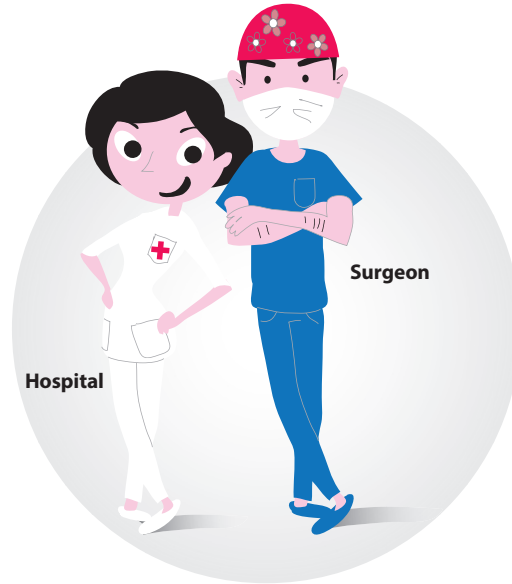
Controlled stocks
Simplified control

- 0 Cleaning
- 0 Decontamination
- 0 Sterilization

Sundry expenses



Optimized storage



Hospital

Surgeon



STERILE R SINGLE USE KIT with state-of-the-art implants

Efficiency



An effective solution & a quick response

Available when needed

READY-TO-USE FOR SURGERY

Optimized handling of URGENT SURGICAL CASES

Ready when you are!



Available when needed:

The Initial S™ EVO kit comes pre-sterilized and ready to use, ideal for use in urgent surgical cases.



Safety:

The Initial S™ EVO kit is fully traceable and has a shelf life of 5 years. Its instrumentation is “always new” and has never been opened or used before.



Storage:

Initial S™ EVO kit can be easily stored in the operating room because of its small size.



Costs:

Initial S™ EVO is a cost-effective solution. The additional costs including cleaning, decontamination, sterilization of kits are cancelled.



Contamination:

Sterile single-use instrumentation minimizes contamination risks.



Buying procedure:

Initial S™ EVO facilitates buying procedures: restocking and orders are simplified, stock management is optimized.

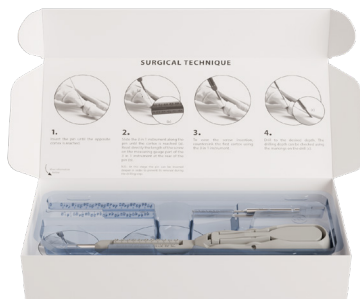
Initial S™ EVO kits - Foot

› Intended purpose

Implants of the Stand-Alone Screws range are intended for fractures fixation, osteotomies and arthrodeses of bones in adults, appropriate for the size of the device. The Initial S™ single use sterile kits consist of a set of instruments or a set of instruments and implants (washers) to be used only in trauma or orthopaedic surgery, when Newclip Technics screws for osteosynthesis are fitted.

› Contra-indications

- Pregnancy.
- Acute or chronic, local or systemic infections.
- Allergy to one of the materials used or sensitivity to foreign bodies.

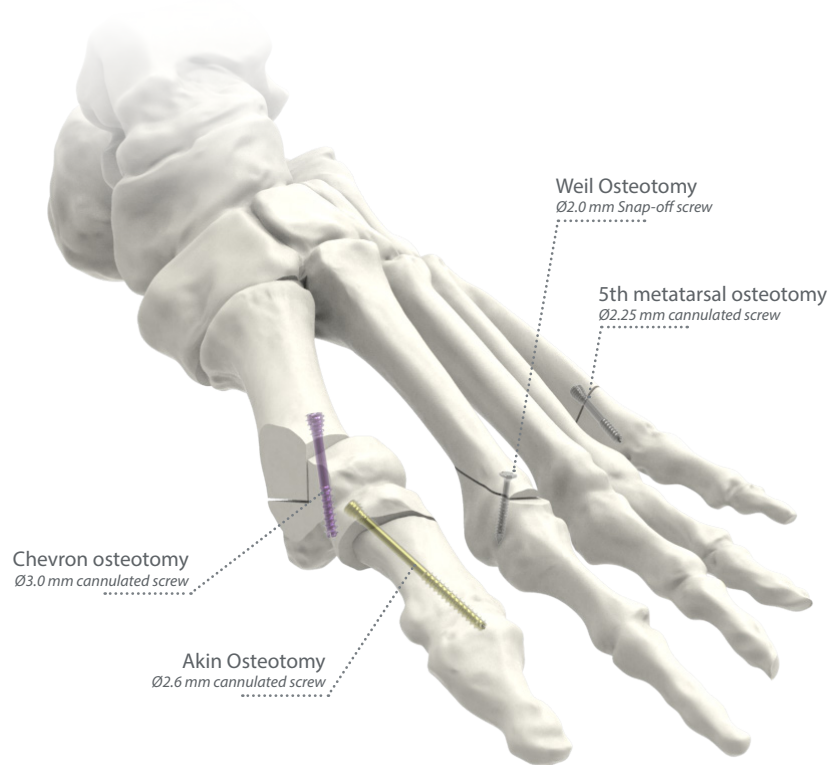


- › Disposable instrumentation kits for use with Footmotion S sterile **cannulated screws**:
Ø2.25 mm, Ø2.6 mm and Ø3.0 mm



- › Disposable instrumentation kit for use with Footmotion S sterile **snap-off screws**:
Ø2.0 mm

Applications*



* Diameters and types of screws shown below are for illustration purposes. The type of screw to be used is up to the surgeon.

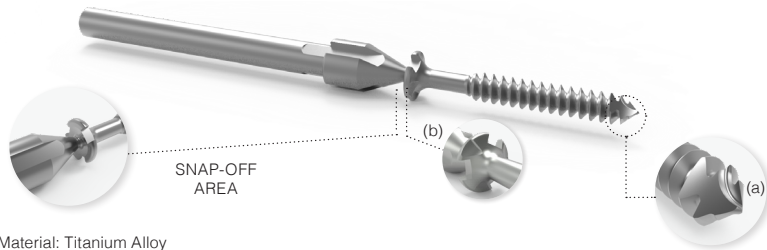
Initial S™ EVO kits - Foot

Comprehensive range

> Snap-off screws*

Technical features

Ø2.0 mm snap-off screw dedicated to Weil osteotomy.



Material: Titanium Alloy

- **Self-drilling** and **self-tapping** extremity ensuring an easy penetration in cortical bone (a),
- **Self-drilling of the screw head** allowing a partial burying to limit soft tissues irritations (b),
- **Section area in a recess** of the screw head

*Available separately in sterile version.

Dedicated instrument

Screwdriver allowing:

- Separation between the shank and the screw,
- Finalization of the compression after separation,
- Implant removal performance.



> Cannulated screws*

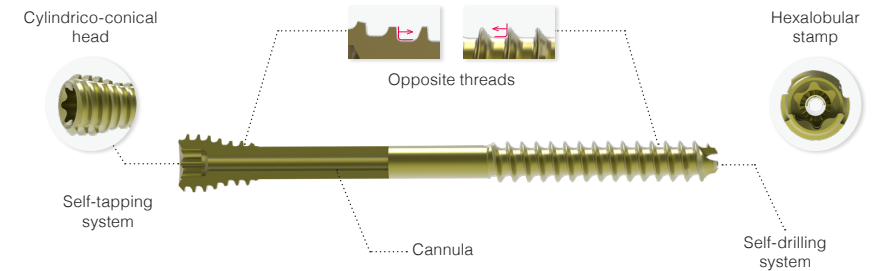
Technical features

3 diameters:

Cannulated screws
Ø2.25 mm
Pin: Ø 0.8 mm

Cannulated screws
Ø2.6 mm
Pin: Ø1.0 mm

Cannulated screws
Ø3.0 mm
Pin: Ø1.0 mm



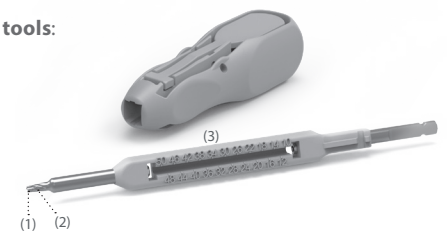
Material: Titanium Alloy

*Available separately in sterile version.

Dedicated instruments

The 3 in 1 instrument combines **three tools**:

- Screwdriver (1),
- Countersink (2),
- Differential length gauge (3).



The 3 in 1 instrument can be used with the handle and the power tool. In the latter case, it is recommended to finalize the screwing by hand.

Initial S™ EVO kits - Foot

Surgical technique - Snap-off screws

Example: surgical technique with a Ø2.0 mm snap-off screw (KIT-S2.0)

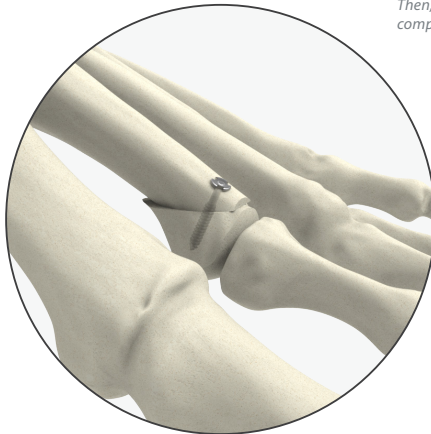


1. Perform a first horizontal cut using the oscillating saw starting at the junction of the dorsal cartilage (1). Then perform the second dorsal cut parallel with the first cut and then remove the bone fragment (2).
2. The reduction is made manually by flexing the toe.

3. Insert the screw with the power tool. As soon as the compression is finished, the screw snaps off.

NB: In case of a hard cortical bone it is recommended to prepare the screw insertion using a Ø1.0 mm pin (33.0210.080).

Caution: In osteoporotic bone, it may be necessary to provoke release of the shank prior to the screw head reaching the cortical bone to avoid excessive screwing. Then, use the screwdriver to realize the compression.

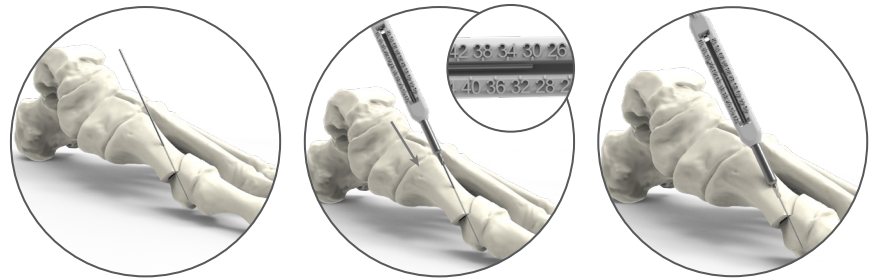


Final result

Initial S™ EVO kits - Foot

Surgical technique - Cannulated screws

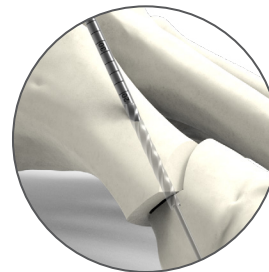
Example: surgical technique with a Ø3.0 mm cannulated screw (KIT-SCD2.6-3.0F)



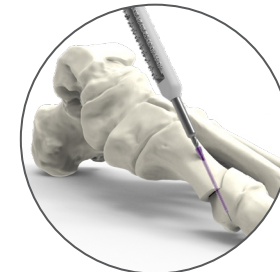
1. Insert the pin until the opposite cortex is reached.

2. Slide the 3 in 1 instrument along the pin until the cortex is reached. Read directly the length of the screw on the measuring gauge part of the 3 in 1 instrument at the rear of the pin. At this stage the pin can be inserted deeper in order to prevent its removal during the drilling step.

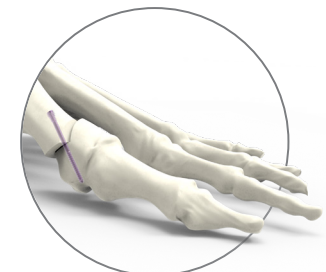
3. To ease the screw insertion, countersink the first cortex using the 3 in 1 instrument.



4. Drill to the desired depth. The drilling depth can be checked using the markings on the drill.



5. Select the appropriate screw length and insert the self-compressive screw along the pin using the screwdriver part of the 3 in 1 instrument until the desired reduction and compression are achieved and the screw head is buried. Then remove the pin.



Final result

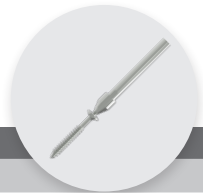
Initial S™ EVO kits - Foot

References

Instrumentation kit for Ø2.0 mm snap-off screws

INITIAL S™ EVO KIT - INSTRUMENTATION CONTENT			
Ref.	Description	Content	Qty
KIT-S2.0	Instrumentation kit for Ø2.0 mm Snap-off screws	Screwdriver for Ø2.0 mm Snap-off screws	1

Ø2.0 mm sterile snap-off screws*



Ø2.0 MM SNAP-OFF SCREWS	
Ref.	Description
WST2.0L11-ST	Ø2.0 mm snap-off Weil screw - L 11 mm - STERILE
WST2.0L12-ST	Ø2.0 mm snap-off Weil screw - L 12 mm - STERILE
WST2.0L13-ST	Ø2.0 mm snap-off Weil screw - L 13 mm - STERILE
WST2.0L14-ST	Ø2.0 mm snap-off Weil screw - L 14 mm - STERILE
WST2.0L15-ST	Ø2.0 mm snap-off Weil screw - L 15 mm - STERILE

*Non anodized

REMOVAL KIT			
Ref.	Description	Content	Qty
KIT-S2.0	Instrumentation kit for Ø2.0 mm Snap-off screws	Screwdriver for Ø2.0 mm Snap-off screws	1

The information presented in this brochure is intended to demonstrate a Newclip Technics product. Always refer to the package insert, product label and/or user instructions before using any Newclip Technics product. Surgeons must always rely on their own clinical judgment when deciding which products and techniques to use with their patients. Products may not be available in all markets. Product availability is subject to the regulatory or medical practices that govern individual markets. Please contact your Newclip Technics representative if you have questions about the availability of Newclip Technics products in your area.

Instrumentation kit for Ø2.25 mm cannulated screws

INITIAL S™ EVO KIT - INSTRUMENTATION CONTENT			
Ref.	Description	Content	Qty
KIT-SCD2.25F	Instrumentation kit for Ø2.25 mm cannulated screws - Foot	Ø1.7 mm quick coupling drill bit – cannula Ø0.9 mm - L75 mm 3 in 1 instrument for Ø2.25 mm screws 5.8 mm single use handle Pin Ø0.8 L90 mm	1 1 1 3

Ø2.25 mm sterile cannulated screws*



Ø2.25 MM CANNULATED SCREW REFERENCES	
Ref.	Description
H0.9HFT2.25L10D-ST	Ø2.25 mm self-compressive screw - cannula Ø0.9 – long thread - L10 mm – STERILE
H0.9HFT2.25L12D-ST	Ø2.25 mm self-compressive screw - cannula Ø0.9 – long thread - L12 mm – STERILE
H0.9HFT2.25L14D-ST	Ø2.25 mm self-compressive screw - cannula Ø0.9 – long thread - L14 mm – STERILE
H0.9HFT2.25L16D-ST	Ø2.25 mm self-compressive screw - cannula Ø0.9 – long thread - L16 mm – STERILE
H0.9HFT2.25L18D-ST	Ø2.25 mm self-compressive screw - cannula Ø0.9 – long thread - L18 mm – STERILE
H0.9HFT2.25L20D-ST	Ø2.25 mm self-compressive screw - cannula Ø0.9 – long thread - L20 mm – STERILE
H0.9HFT2.25L22D-ST	Ø2.25 mm self-compressive screw - cannula Ø0.9 – long thread - L22 mm – STERILE
H0.9HFT2.25L24D-ST	Ø2.25 mm self-compressive screw - cannula Ø0.9 – long thread - L24 mm – STERILE
H0.9HFT2.25L26D-ST	Ø2.25 mm self-compressive screw - cannula Ø0.9 – long thread - L26 mm – STERILE
H0.9HFT2.25L28D-ST	Ø2.25 mm self-compressive screw - cannula Ø0.9 – long thread - L28 mm – STERILE
H0.9HFT2.25L30D-ST	Ø2.25 mm self-compressive screw - cannula Ø0.9 – long thread - L30 mm – STERILE
H0.9HFT2.25L32D-ST	Ø2.25 mm self-compressive screw - cannula Ø0.9 – long thread - L32 mm – STERILE
H0.9HFT2.25L34D-ST	Ø2.25 mm self-compressive screw - cannula Ø0.9 – long thread - L34 mm – STERILE

*Non anodized

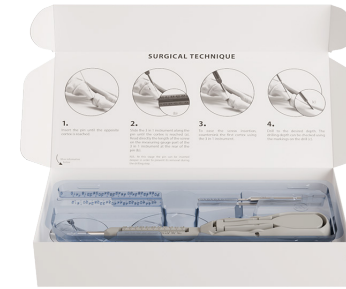
➤ For removal of the Ø2.25 mm screws, please use the T7 screwdriver (ANC1672).

Initial S™ EVO kits - Foot

References

Instrumentation kit for Ø2.6 mm & 3.0 mm cannulated screws

INITIAL S™ EVO KIT - INSTRUMENTATION CONTENT			
Ref.	Description	Content	Qty
KIT-SCD2.6-3.0F	Instrumentation kit for Ø2.6 mm & Ø3.0 mm cannulated screws - Foot	Ø2.0 mm quick coupling drill bit – cannula Ø1.1 mm - L80 mm 3 in 1 instrument for Ø2.6 mm & Ø3.0 mm screws 5.8 mm single use handle Pin Ø1.0 L90 mm	1 1 1 3

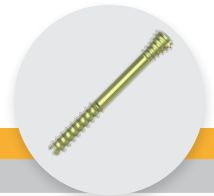


Initial kit



Removal kit

Ø2.6 mm sterile cannulated screws*



Ø2.6 MM CANNULATED SCREW REFERENCES	
Ref.	Description
H1.1HFT2.6L10D-ST	Ø2.6 mm self-compressive screw - cannula Ø1.1 – long thread - L 10 mm - STERILE
H1.1HFT2.6L12D-ST	Ø2.6 mm self-compressive screw - cannula Ø1.1 – long thread - L 12 mm - STERILE
H1.1HFT2.6L14D-ST	Ø2.6 mm self-compressive screw - cannula Ø1.1 – long thread - L 14 mm - STERILE
H1.1HFT2.6L16D-ST	Ø2.6 mm self-compressive screw - cannula Ø1.1 – long thread - L 16 mm - STERILE
H1.1HFT2.6L18D-ST	Ø2.6 mm self-compressive screw - cannula Ø1.1 – long thread - L 18 mm - STERILE
H1.1HFT2.6L20D-ST	Ø2.6 mm self-compressive screw - cannula Ø1.1 – long thread - L 20 mm - STERILE
H1.1HFT2.6L22D-ST	Ø2.6 mm self-compressive screw - cannula Ø1.1 – long thread - L 22 mm - STERILE
H1.1HFT2.6L24D-ST	Ø2.6 mm self-compressive screw - cannula Ø1.1 – long thread - L 24 mm - STERILE
H1.1HFT2.6L26D-ST	Ø2.6 mm self-compressive screw - cannula Ø1.1 – long thread - L 26 mm - STERILE
H1.1HFT2.6L28D-ST	Ø2.6 mm self-compressive screw - cannula Ø1.1 – long thread - L 28 mm - STERILE
H1.1HFT2.6L30D-ST	Ø2.6 mm self-compressive screw - cannula Ø1.1 – long thread - L 30 mm - STERILE
H1.1HFT2.6L32D-ST	Ø2.6 mm self-compressive screw - cannula Ø1.1 – long thread - L 32 mm - STERILE
H1.1HFT2.6L34D-ST	Ø2.6 mm self-compressive screw - cannula Ø1.1 – long thread - L 34 mm - STERILE

*Yellow anodized

➤ For removal of Ø2.6 mm and Ø3.0 mm screws, please use the T8 screwdriver (ANC1673).

Ø3.0 mm sterile cannulated screws*

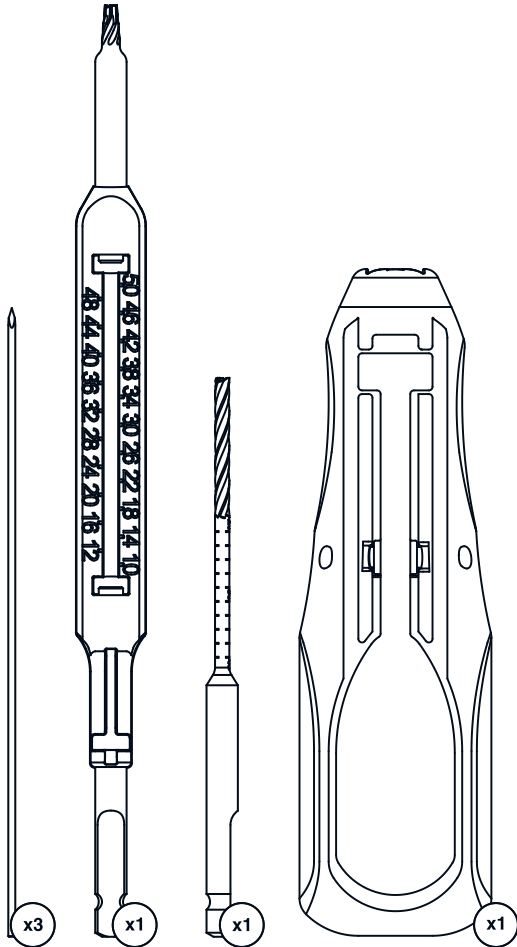


Ø3.0 MM CANNULATED SCREW REFERENCES	
Ref.	Description
H1.1HFT3.0L10D-ST	Ø3.0 mm self-compressive screw - cannula Ø1.1 – long thread - L 10 mm - STERILE
H1.1HFT3.0L12D-ST	Ø3.0 mm self-compressive screw - cannula Ø1.1 – long thread - L 12 mm - STERILE
H1.1HFT3.0L14D-ST	Ø3.0 mm self-compressive screw - cannula Ø1.1 – long thread - L 14 mm - STERILE
H1.1HFT3.0L16D-ST	Ø3.0 mm self-compressive screw - cannula Ø1.1 – long thread - L 16 mm - STERILE
H1.1HFT3.0L18D-ST	Ø3.0 mm self-compressive screw - cannula Ø1.1 – long thread - L 18 mm - STERILE
H1.1HFT3.0L20D-ST	Ø3.0 mm self-compressive screw - cannula Ø1.1 – long thread - L 20 mm - STERILE
H1.1HFT3.0L22D-ST	Ø3.0 mm self-compressive screw - cannula Ø1.1 – long thread - L 22 mm - STERILE
H1.1HFT3.0L24D-ST	Ø3.0 mm self-compressive screw - cannula Ø1.1 – long thread - L 24 mm - STERILE
H1.1HFT3.0L26D-ST	Ø3.0 mm self-compressive screw - cannula Ø1.1 – long thread - L 26 mm - STERILE
H1.1HFT3.0L28D-ST	Ø3.0 mm self-compressive screw - cannula Ø1.1 – long thread - L 28 mm - STERILE
H1.1HFT3.0L30D-ST	Ø3.0 mm self-compressive screw - cannula Ø1.1 – long thread - L 30 mm - STERILE
H1.1HFT3.0L32D-ST	Ø3.0 mm self-compressive screw - cannula Ø1.1 – long thread - L 32 mm - STERILE
H1.1HFT3.0L34D-ST	Ø3.0 mm self-compressive screw - cannula Ø1.1 – long thread - L 34 mm - STERILE
H1.1HFT3.0L36D-ST	Ø3.0 mm self-compressive screw - cannula Ø1.1 – long thread - L 36 mm - STERILE
H1.1HFT3.0L38D-ST	Ø3.0 mm self-compressive screw - cannula Ø1.1 – long thread - L 38 mm - STERILE
H1.1HFT3.0L40D-ST	Ø3.0 mm self-compressive screw - cannula Ø1.1 – long thread - L 40 mm - STERILE

*Purple anodized

Instrumentation
for Cannulated screws

FOOT



 NEWCLIP-TECHNICS

STM
INITIAL **EVO**
FOOT



NEWCLIP TECHNICS
45 rue des Garottières
44115 Haute-Goulaine, France
Tél.: +33 (0)2 28 21 37 12
Fax : +33 (0)2 40 63 68 37
www.newcliptechnics.com