

XPERT WRIST 2.4 - VOLAR PLATES.

FAST DRILLING GUIDE



Intended purpose:

The implants of the Xpert Wrist range are intended for the fixation of hand and forearm fractures, osteotomies and arthrodeses in adults.

Contraindications :

- Pregnancy.
- Acute or chronic local or systemic infections.
- Allergy to one of the materials used or sensitivity to foreign bodies.

TECHNICAL FEATURES

- Specific left and right fast guides to fit all Xpert Wrist 2.4 volar plates sizes 2 & sizes 3.
- Preangulation of the distal screws.
- Rapid screw insertion and easy to use.
- Radiolucent.



REFERENCES

FAST GUIDE INSTRUMENTATION

Ref.	Description
ANC1171	Fast drilling guide for distal radius plate - Narrow - Left - Sizes 1-2 (DTGVN1-2)
ANC1172	Fast drilling guide for distal radius plate - Narrow - Right - Sizes 1-2 (DTDVN1-2)
ANC1173	Fast drilling guide for distal radius plate - Standard - Left - Sizes 1-2 (DTGVS1-2)
ANC1174	Fast drilling guide for distal radius plate - Standard - Right - Sizes 1-2 (DTDVS1-2)
ANC1175	Fast drilling guide for distal radius plate - Wide - Left - Size 2 (DTGVW2)
ANC1176	Fast drilling guide for distal radius plate - Wide - Right - Size 2 (DTDVW2)
ANC1177	Fast drilling guide for distal radius plate - Narrow - Left - Size 3 (DTGVN3)
ANC1178	Fast drilling guide for distal radius plate - Narrow - Right - Size 3 (DTDVN3)
ANC1179	Fast drilling guide for distal radius plate - Standard - Left - Size 3 (DTGVS3)
ANC1180	Fast drilling guide for distal radius plate - Standard - Right - Size 3 (DTDVS3)
ANC1181	Fast drilling guide for distal radius plate - Wide - Left - Size 3 (DTGVW3)

ANC1182 Fast drilling guide for distal radius plate - Wide - Right - Size 3 (DTDVW3)

ANC1213 Ø1.8 mm non threaded guide gauge for Ø2.4 mm screws

ANC1228 Ø1.8 mm non threaded guide gauge for Ø2.4 mm screws with key



ADDITIONAL REFERENCES

All the fast drilling guides must be used with the Xpert Wrist 2.4 plates and instruments found in the dedicated kit. The references of the complementary plates and instruments are available in the brochure **XPERT WRIST 2.4**.

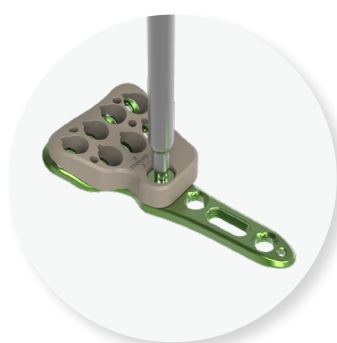


REMOVAL SET

If you have to remove XPERT WRIST 2.4 implants, make sure to order the Newclip Technics removal set, which includes the following instruments:

- ANC575: T8 quick coupling screwdriver
- ANC350: Ø4.5 mm AO quick coupling handle - Size 1

Example using a distal radius size 2 standard plate (DTDVS2) and the fast drilling guide (ANC1174).

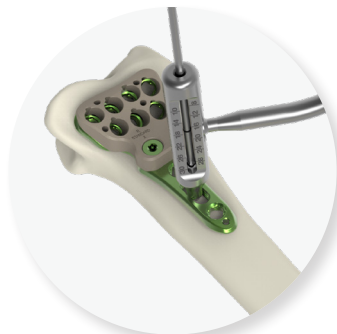


1. Use the fast guide associated with the chosen plate (ANC1171 to ANC1182).

Lock the fast guide onto the plate with the screwdriver (ANC575).



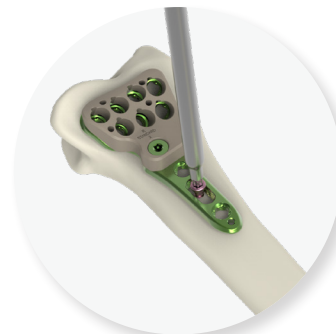
2. Position the plate on the volar aspect of the radius below the watershed line. The diaphyseal part of the plate is parallel to the radial column.



3. Position the Ø1.8 mm non threaded bent guide gauge (ANC695) in the oblong hole and drill using the quick coupling drill bit (ANC696).

Option 1: determine the screw length with the threaded bent guide gauge (ANC695).

Option 2: determine the screw length with the length gauge (ANC102).



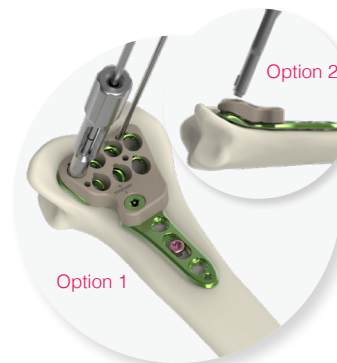
4. Insert a Ø2.4 mm non-locking screw (CT2.4Lxx) into the oblong hole to hold the plate in position.

NB: in the case of poor bone quality, a Ø2.4 mm locking screw (SDT2.4Lxx) can be inserted to increase stability.



5. Insert a Ø1.4 mm pin (33.0214.120) into the radioulnar pin hole and assess the joint space.

If necessary, the position of the plate can be adjusted by loosening the non-locking screw (CT2.4Lxx) in the oblong hole and by sliding the plate. Then, tighten the non-locking screw (CT2.4Lxx).

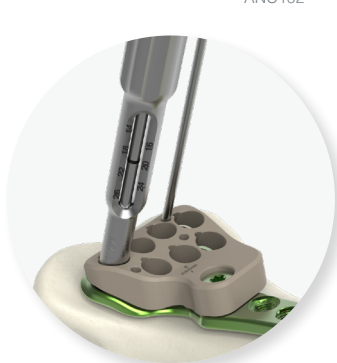


6. Perform the drilling by connecting into the fast guide:

Option 1: the non threaded guide gauge (ANC1213)

Option 2: the non threaded guide gauge with key (ANC1228) allowing for an oriented reading of the markings.

Drill using the quick coupling bit (ANC696).



7. Determine the screw length, by reading the markings on the drill bit and the guide gauge.



8. Insert a Ø2.4 mm locking screw (SDT2.4Lxx) using the screwdriver (ANC575).



9. Repeat the steps 6, 7 and 8 for the remaining distal holes.

Remove the radioulnar pin and also the fast drilling guide using the screwdriver (ANC575).



10. Use the monoaxial technique detailed in the XPERT WRIST 2.4 brochure for the insertion of the remaining proximal screws.



FINAL RESULT

⚠ The final tightening of the screws must be performed by hand.

The information presented in this brochure is intended to demonstrate a NEWCLIP TECHNICS product. Always refer to the package insert, product label and/or user instructions before using any NEWCLIP TECHNICS product. Surgeons must always rely on their own clinical judgment when deciding which products and techniques to use with their patients. Products may not be available in all markets. Product availability is subject to the regulatory or medical practices that govern individual markets. Please contact your NEWCLIP TECHNICS representative if you have questions about the availability of NEWCLIP TECHNICS products in your area.

Newclip Technics : 45 rue des Garottières, 44115 Haute-Goulaine, France. Tél.: +33 (0)2 28 21 37 12 - Fax: +33 (0)2 40 63 68 37 - orders@newcliptechnics.com - www.newcliptechnics.com

Manufacturer: Newclip Technics – Brochure EN – XPERT WRIST 2.4 FAST GUIDE – ED3 – 10/2024 - Medical device EC: class IIb – CE1639 SGS BE - US Class: II.

Read labelling and instructions before the use of Newclip Technics medical devices. These products must be handled and/or implanted by trained and qualified staff who have read the instructions before use.