

Why choose

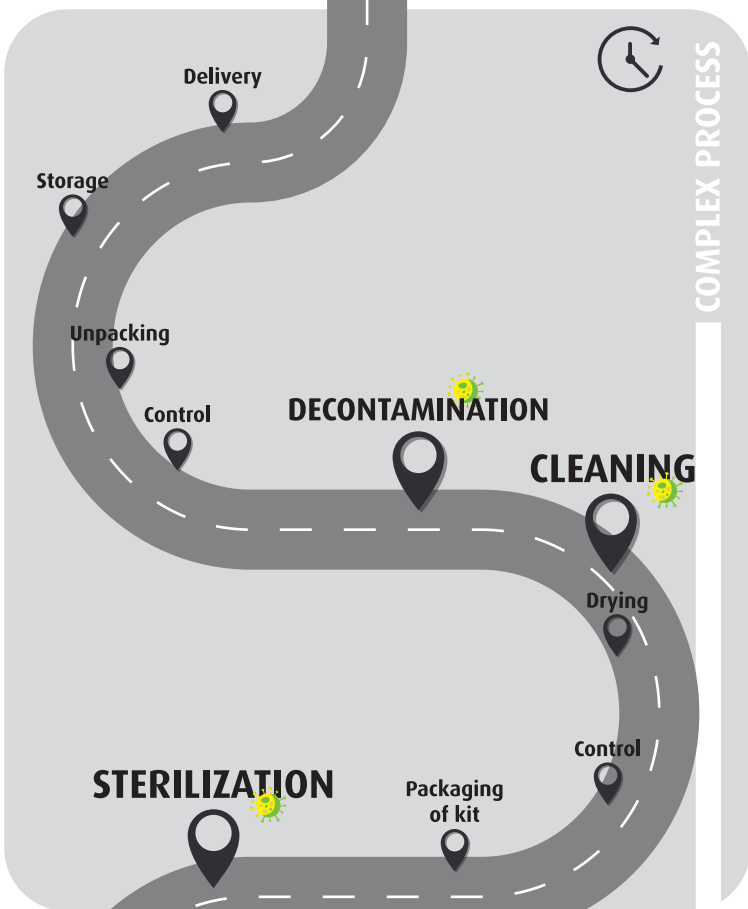
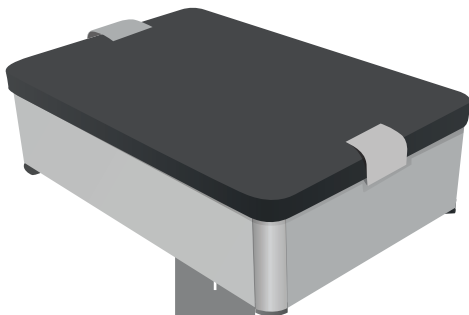
# SINGLE USE KITS?



NEWCLIP  
TECHNICS

IN TODAY'S HEALTH CRISIS, TIME IS OF THE ESSENCE AND MAKING THE RIGHT DECISION IS KEY!  
HOW TO CHOOSE BETWEEN A STANDARD TRAUMA KIT & INITIAL SOLUTIONS, SINGLE-USE KIT?

## STANDARD TRAUMA KITS



● **COMPLEX TRACEABILITY**

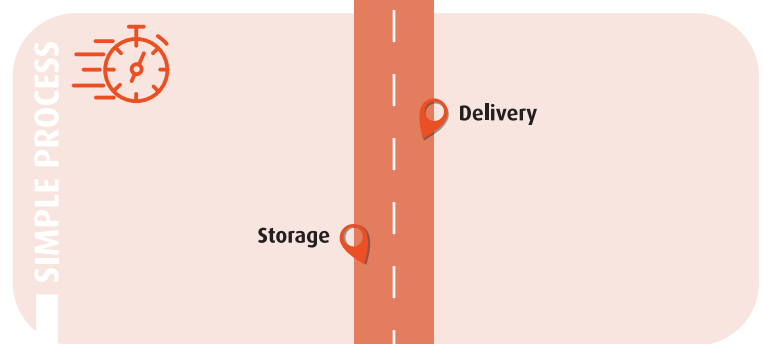
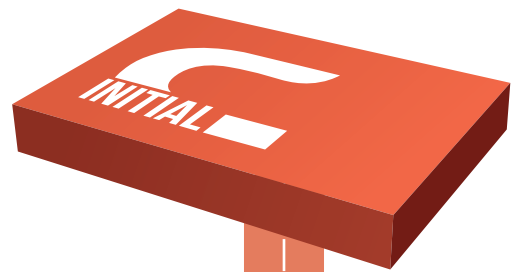
**CALLING ON  
MEDICAL STAFF**

**SURGERY**

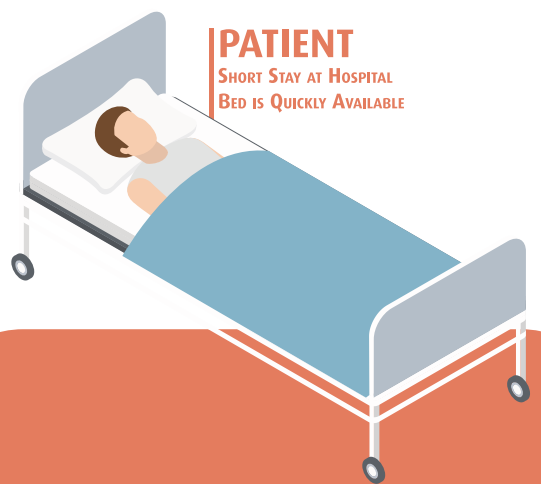


## INITIAL SOLUTIONS SINGLE USE KITS

(Using an Initial C Kit)



**SURGERY**



- CLEANING
- DECONTAMINATION
- STERILIZATION

↘ **RISK OF  
CONTAMINATION**

**100% TRACEABLE**

**ALWAYS NEW**

**MINIMUM  
MEDICAL STAFF**

**PROTECTING BOTH  
PATIENTS AND STAFF**

**EASY TO USE KIT**

During a sanitary crisis, the health and the safety of your patients and staff are your priority.  
A single-use kit is the answer - **make sure you make the right decision.**  
We can beat this together!

Initial Solutions kits are also available for distal fibula and distal radius fractures and headless compression screws

Medical device EC : class IIb - CE16395GS BE - Read labeling and instructions before use. Non-contractuel pictures

**Newclip Technics**  
PA de la Lande Saint Martin, 45 rue de la Garottières,  
44115 Haute Goulaine, France  
+33 (0)2 28 21 37 12  
orders@newcliptechnics.com  
www.newcliptechnics.com

**Newclip USA**  
642 Larkfield Center  
Santa Rosa CA 95403, USA  
+1 707 230 5078  
customerservice@newclipusa.com  
www.newclipusa.com

**Newclip GmbH**  
Pröllstraße 11  
86157 Augsburg, Deutschland  
+49 (0)821 650 749 40  
info@newclipgmbh.com  
www.newclipgmbh.de

**Newclip Australia**  
3B/11 Donkin Street  
West End 4101, Australia  
+61 (0)2 81 886 110  
solutions@newclipaustralia.com  
www.newcliptechnics.com

**Newclip Technics Japan**  
KKK Bldg. 502, 3-18-1 Asakusabashi  
Taito-Ku, Tokyo,  
111-0053, Japan  
+81 (0)3 58 25 49 81  
www.newcliptechnics.com